



SV ENVIRO LABS & RESEARCH PVT. LTD

(Formerly known as SV ENVIRO LABS & CONSULTANTS)



Recognised by Government of India
Ministry of Environment, Forests and
Climate Change (MoEF & CC), New Delhi
Accredited by NABET & NABL



SINCE 1996



One stop solution for all Environmental & Pollution control needs



Company Overview



Welcome to SV ENVIRO LABS & RESEARCH PVT. LTD. where excellence meets environmental solutions! Since our inception in the vibrant mid-90s of Yanam, Puducherry, we have proudly led the way in delivering top-notch services to combat environmental pollution. Recognized by the Ministry of Environment, Forest and Climate Change (MoEF & CC), accredited by NABET & NABL and certified with ISO 9001:2015, ISO 14001:2015 & ISO 45001:2018, SVELC stands as a beacon of quality and reliability in the industry.

With over 25+ years of experience in environmental consultancy, pollution control and testing services, we have honed our expertise to provide unparalleled solutions tailored to your needs. Our state of the art laboratory, nestled in a sprawling 7500 square-foot space in Visakhapatnam, the city of destiny, is renowned for its analytical prowess in environmental engineering.

Backed by a team of experts whose technical acumen is second to none, we are committed towards economical and reliable solutions for all your environmental and safety challenges.

How Can We Help ?

Environmental Impact Assessment (EIA) services

We go beyond conventional solutions by offering comprehensive Environmental Impact Assessment (EIA) services. Our dedicated Functional Area Expert Team works diligently to assess and mitigate the environmental implications of projects, ensuring sustainable development and compliance with regulatory standards.

Laboratory Services

Our cutting-edge laboratory is the cornerstone of our commitment to excellence. Empowered with state-of-the-art technology and staffed with skilled professionals, our laboratory services offer precise and reliable analysis in environmental engineering. From water quality testing to air pollution monitoring, we provide meticulous and comprehensive solutions to meet the diverse needs of our clients, ensuring the highest standards of accuracy and

Our services include Supply, Commissioning and Maintenance of cutting-edge monitoring systems for Ambient Air Quality, Effluent Discharge, Stack Emissions, Meteorological Data, Groundwater levels, Water Flow Rates & Facility Security. With seamless connectivity to CPCB/SPCB networks, we help businesses achieve Real-Time Data Transmission and Regulatory Reporting, enhancing Environmental Sustainability & Operational Efficiency.



Environmental Consultancy Services

EIA & EMP Studies

- EIA Report and Baseline Data Generation
- Environmental Social Impact Assessment
- Environmental Management Plan
- Public Hearings
- MOEFCC & SEIAA Presentations
- Pre-Feasibility Report Preparations
- Environmental & Safety Audits
- Preparation of Performance Evaluations, Adequacy Reports
- Modeling Studies for Prediction of Impacts
- Half yearly Compliances for EC, CRZ, CTE & CTO
- Environmental Statements –Form -V
- Filing of Hazardous waste returns, Bio-Medical waste returns
- Filing of CTE & CTO approvals and renewals from SPCB
- Carbon Credit
- Marine Ecology
- Wildlife Conservation Plan
- Mangrove Development Plan
- Forest & Wildlife Clearance

Survey and Mining

- DGPS / Total Station Survey
- Mining Plan / Mining scheme / Modified
- Mining Plans preparation
- Cluster Map preparations

Safety Studies

- Risk Analysis / DMP / ERDMP
- On-Site & Off-Site Emergency Plans
- Safety Trainings & Mock Drills
- Hazard and Operability (HAZOP) Study
- Emergency Response & Disaster Management Plan (ERDMP)

NABET Accredited Sectors

- Mining of Minerals including Opencast / Underground Mining
- Offshore and Onshore Oil and Gas Exploration, Development & Production
- River Valley Projects
- Chemical Fertilizers
- Synthetic Organic Chemicals Industries
- Distilleries
- Industrial Estates / Parks / Complexes / Areas, Export Processing Zones (EPZs), Special Economic Zone (SEZs), Biotech Parks and Leather Complexes.
- Ports, Harbours, Breakwaters & Dredging
- Common Municipal Solid Waste Management Facility (CMWSWMF)
- Building and Construction Projects
- Townships & Area Development Projects

Marine Studies

- Marine EIA
- Depth Water Sampling
- Sediment Analysis
- Phytoplankton and Zooplankton
- Benthos

Major Instruments

- GC-MSMS Triple Quad
- ICP-OES
- GC with ECD & NPD
- UV Visible Spectrophotometer & FTIR
- DGMS Approved Personal Dust Sampler and Dosimeter

Laboratory & Monitoring Services

Environmental Monitoring

- Ambient Air Quality
- Stationary and Source Emissions
- Work Zone and Fugitive Emission
- Indoor Air Quality
- Personal Hygiene Monitoring
- Ambient and Work Zone Noise
- Volatile Organic Compounds

Water & Waste Water Analysis

- Physical
- Chemical
- Micro Biological
- Trace Metals
- Pesticide Residues
- Polyaromatic Hydrocarbons
- Polychlorinated Bi-Phenyls
- Volatile Organic Compounds

Soil & Sludge Analysis

- Physical
- Chemical
- Mechanical
- Nutrients
- Trace Metals
- Pesticide Residues

Building & Material Analysis

- Sieve Analysis
- Compressive Strength
- Water Absorption
- Aggregate Impact Value
- Flakiness and Elongation Index
- Specific Gravity

Toxicological Analysis

- LC50 Test
- Bio Assay Studies
- Leachate Studies

Coal And Petroleum Product Analysis

- Proximate Analysis
- Ultimate Analysis
- Gross Calorific Value
- Flash and Fire Point
- Kinematic Viscosity

Metals, Alloys & Ore Analysis

- Ferrous and Non-Ferrous Alloys
- Iron Ore, Manganese Ore, Quartz, Etc...

Manufacturing Of Pollution Control Equipments

- ETP, STP and ZLD Treatment Systems
- On Turnkey Basis
- Bagfilters and Cyclones
- Wet Scrubbers
- Activated Carbon Filter
- Pressurized Sand Filter

Softwares

- AERMOD
- GIS
- i Noise
- Phast Lite for Risk
- PHA-Pro Software for HAZOP
- Sedimentation Model

Our Major Projects



Oil & Gas

ONGC (Oil & Natural Gas Corporation)

Obtained Environmental clearance for onshore development and production of Oil & Gas from 172 wells in 8 PML blocks.

RIL (Reliance Industries Ltd)

EIA studies for exploratory surveys in offshore KG basin.

Ports & Harbors

KSPL

Environmental clearances for 5th, 6th and 7th berths. LNG Re-gasification.

DRDO

Carrying out EIA Study at Rutland, Portblair.



Distilleries

Sarvaraya Sugars

Obtained EC expansion in production capacity from 52.5 KLPD (Molasses based ENA/Ethanol) to 202.5 KLPD

KBK Biotech Pvt Ltd

Obtained EC for 485.5 KLPD for ENA / Ethanol.



Synthetic Organic Chemical Industry

Kanoria Chemicals

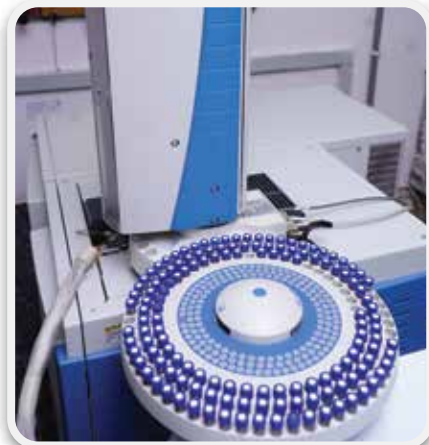
Obtained Environmental clearance for the unit at APIIC.

Krebs Biochemical

Obtained Environmental clearance for the unit at SPSR.



Pesticide Residue, PAH, PCB & VOC Testing



- Analysis of pesticide residues, PAH & PCBs
 - Follows Indian Standard, APHA & USEPA
 - Testing for all required for:
 - Pesticides
 - Polyaromatic hydrocarbons
 - Polychlorinated biphenyls
-
- Test VOCs in ambient & indoor air samples
 - Follows Indian Standards 5182 & USEPA
 - 60 analytes tests as per EPA 502/524.2

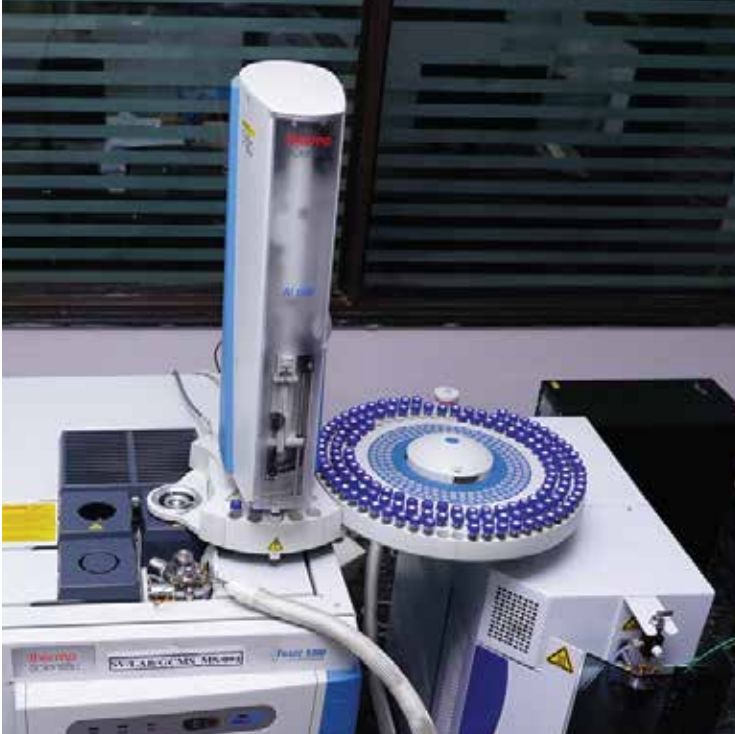


Our Major Clients



Sri Sarwaraya Sugars





Corporate Office

Enviro House, B-1, Block-B, IDA
Autonagar, Visakhapatnam
Pincode - 530012

Hyderabad Office

#402, SaiKrishna Villa,
Behind CMR Shopping Mall,
AS Raju Nagar, Kukatpally
Hyderabad - 500072

Other Branches

Vijayawada • Yanam • Port Blair

Our Contacts



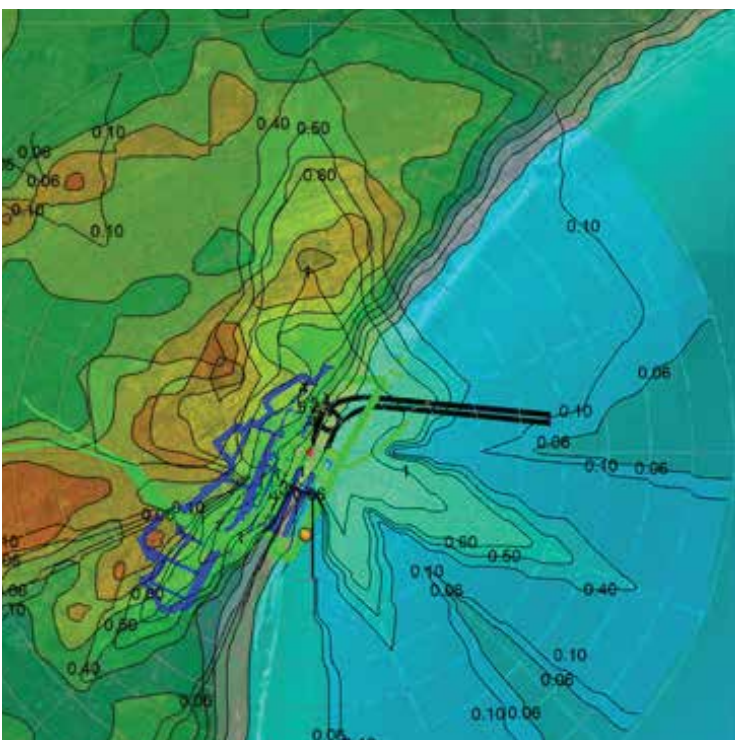
+91 9440-338-628

+91 9133-210-111



info@senvirolabs.com

senviro_labs@yahoo.co.in



Follow us



www.senvirolabs.com



facebook.com/senvirolabs



twitter.com/senvirolabs



instagram/senvirolabs



youtube.com/@senvirolabs



linkedin.com/company/senvirolabs

